

## Veterans Day Program- November 11

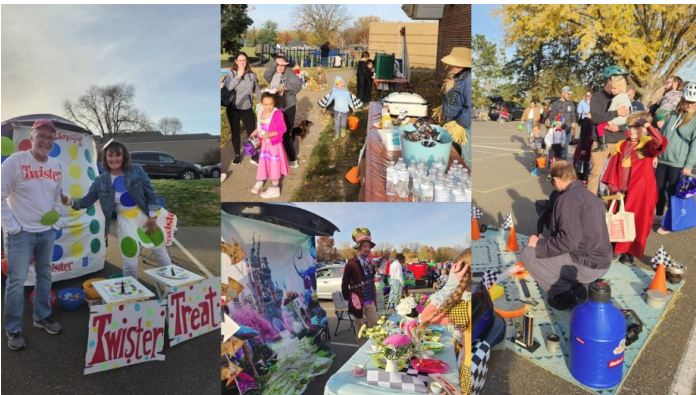
Join us on November 11 at 2:45 p.m. in the Salem Gym for a celebration of Veteran's Day! The program will feature patriotic songs, poems, and a special guest speaker, Jeff Ross.

## Bingo Night- Sunday November 10

It's Bingo Night on November 10! From 4 to 6 pm, enjoy snacks, win prizes, and support our Youth Group. Entry is \$15 per person or \$50 for a group of four. Dinner, snacks, and extra bingo cards will be available for purchase, and free childcare is included. Register online or purchase tickets at the door. Cash, Check, or Venmo accepted.

## Trunk or Treat Thank You

Thank you to all the volunteers who made our Trunk or Treat event a success! Your creativity, enthusiasm, and generosity made a huge impact on Sunday. We couldn't have done it without each one of you bringing smiles, games, and treats to our neighborhood. Your efforts are truly appreciated, and we are grateful for the joy you shared with everyone. We had volunteers coordinating, hosting trunks, serving food, distributing flyers, and donating candy. We ended up with 27 trunks serving over 750 people. What a blessing!



## Before Care Supervisor Needed Urgently

Salem School is in need of a supervisor for our before-care program beginning November 7. Care is provided from 7:00am-8:30am and the pay would be \$30 a time or \$20/hr. Contact Principal Klatt with questions or to apply at [rklatt@salemlutheran.org](mailto:rklatt@salemlutheran.org).

## Sunday JAM Singing - November 10

Calling all JAM students! Reminder that we are singing on November 10 at 10:30 am. Contact Amy Stilwagon with any questions at [astilwagon@salemlutheran.org](mailto:astilwagon@salemlutheran.org).

## THIS WEEK AT SALEM

- Sun, 11/3 8:00 am Worship**  
9:15 am Adult Bible Study & Sunday JAM (Jesus and Me)  
**10:30 am Worship**  
12:00 pm Quarterly Congregational Meeting  
6:30 pm Youth Group
- Mon 11/4 6:30 pm Bible Basics**  
7:00 pm Community Men's Basketball
- Tues, 11/5 10:15 am Tuesday Morning Bible Study**  
6:00 pm Outreach Committee Meeting
- Wed, 11/6 9:20 am Midweek Chapel**  
10:00 am Women's Bible Study  
6:15 pm Choir  
6:30 pm Catechism Class  
7:15 pm Handbells & Men's Chorus
- Thur, 11/7 12:30 pm Women's Guild**  
4:30 pm B-Team Basketball Home Game  
5:30 pm A-Team Basketball Home Game
- Sat, 11/9 5:00 pm Worship**  
6:15 pm Adult & Teen Open Volleyball
- Sun, 11/10 8:00 am Worship with Communion**  
9:15 am Guest Presentation & Sunday JAM (Jesus and Me)  
**10:30 am Worship with Communion**  
4:00-6:00 pm Bingo Night

## Congregational Meetings

This Sunday (November 3rd) Salem will hold our quarterly congregational meeting after the late service. All members are encouraged to attend to hear reports from our leaders about the ministry God is doing among us, and to share your thoughts with the church. On Sunday, November 17th we will hold a meeting to extend a call for associate pastor.

Salem Principal Ryan Klatt has received a call to serve as Youth Ministry director at NorthCross Lutheran in Lakeville, MN. Please keep Mr. Klatt and his family in your prayers as they deliberate their opportunities to serve God. Feel free to share your thoughts with Mr. Klatt in person or by email at [rklatt@salemlutheran.org](mailto:rklatt@salemlutheran.org).

### Guest Speaker from Lighthouse Youth Center

On Sunday, November 10th we welcome Pastor James Buske as preacher and guest presenter. Pastor Buske serves as executive director of Lighthouse Youth Center (LYC), a ministry working with under-served kids in Milwaukee. LYC operates after school 50 weeks out of the year to provide a central and safe place for children ages 10-18 to gather for recreation, academic assistance, spiritual growth, and Bible study. What began in a single church in 2006 now operates on five campuses and has served over 150,000 students. Join us to be encouraged in faith and to praise God for his blessing on this ministry.

---

### Valley Outreach Drive Success

Salem's Caring Committee hosted their annual food drive for Valley Outreach during the month of October. This year they partnered with our school. Our school faculty had a school wide competition. For each large bin of donations that the students filled, they earned a different classroom prize. Needless to say, this was a huge success and we will have our largest donation to date for Valley Outreach. It was a fabulous opportunity for our students to learn about charitable giving. Thank you to the Caring Committee for their work and to the teachers who encouraged and motivated their students!

---

### Volunteers needed!

Want to volunteer, but not sure where to start? Take our volunteer survey and let us know what your interests and availability are, and we'll connect you with opportunities to serve. Paper surveys can be found in the narthex or scan the QR code here to fill it out online. Take yours now and get connected! Questions? Contact stewardship@salemlutheran.org or Zuber Shah @ 651-491-4684.



### Ministry Support

God blessed Salem with offerings this past week of \$34,729.45 for Current Expenses and \$980.15 for Missions. We pray God leads us to generous giving. You can give digitally if you prefer at [salemlutheran.org/donate](https://www.salemlutheran.org/donate).

### Contact Information

Church office (Abigail Ibsch): 651-439-7831 | [church@salemlutheran.org](mailto:church@salemlutheran.org)  
Pastor Ryan Wolfe: 701-989-9721 | [rwolfe@salemlutheran.org](mailto:rwolfe@salemlutheran.org)  
Principal Ryan Klatt: 763-898-6273 | [rklatt@salemlutheran.org](mailto:rklatt@salemlutheran.org)  
School Office (Diane Light): 651-439-7831 | [school.office@salemlutheran.org](mailto:school.office@salemlutheran.org)  
Parish Nurse (Kathy Smart): 651-383-5126 | [nurse@salemlutheran.org](mailto:nurse@salemlutheran.org)

### Butter Braids for Sale

The 8th-grade class is selling Butter Braids to help raise money for their class trip in June. This is a great opportunity to stock up for Thanksgiving and Christmas. An order form is available at the Information Center in the church entry.

---

### Salem Social Group- Upcoming Events

All adults are welcome to join the Salem social group for Thanksgiving at the Lowell Inn on November 28th at 12:45 pm. The cost is \$38 per person. There is a signup sheet on the information table in the narthex. Deadline to sign up is Sunday, 11/24. **Note: If you sign up and then do not attend, our group will be charged \$20 per person. We will pay it for you, but you must pay us back.** If you have any questions, contact George Smolinski at [gmolin@earthlink.net](mailto:gmolin@earthlink.net)

Christmas Dinner will be Sunday, December 8, at Afton House Inn, Main Dining Room. Arrival time is 11:45 am - 12:30 pm. You are welcome to bring adult family or friends. Please join us for some fun and fellowship. Buffet dinner includes beef marsala, chicken in lemon caper sauce, mostaccioli, salads, sides, coffee, and weather. Cost is \$29 per person plus tax and gratuity. The sign up sheet is on the information table in the narthex. Deadline for signup is Sunday, 11/24. If you have any questions, contact George Smolinski at (651) 334-6055 or [gsmolin@earthlink.net](mailto:gsmolin@earthlink.net).



### In Our Prayers

- ✝ Comfort in Jesus' promises of blessing to the saints triumphant already in heaven.
- ✝ For blessing on our nation, and peace in knowing that no matter who leads our nation, God leads all things.
- ✝ For members and friends suffering from various mental and physical health challenges.

